

SALUDA SHOALS PARK TRAILS MAP



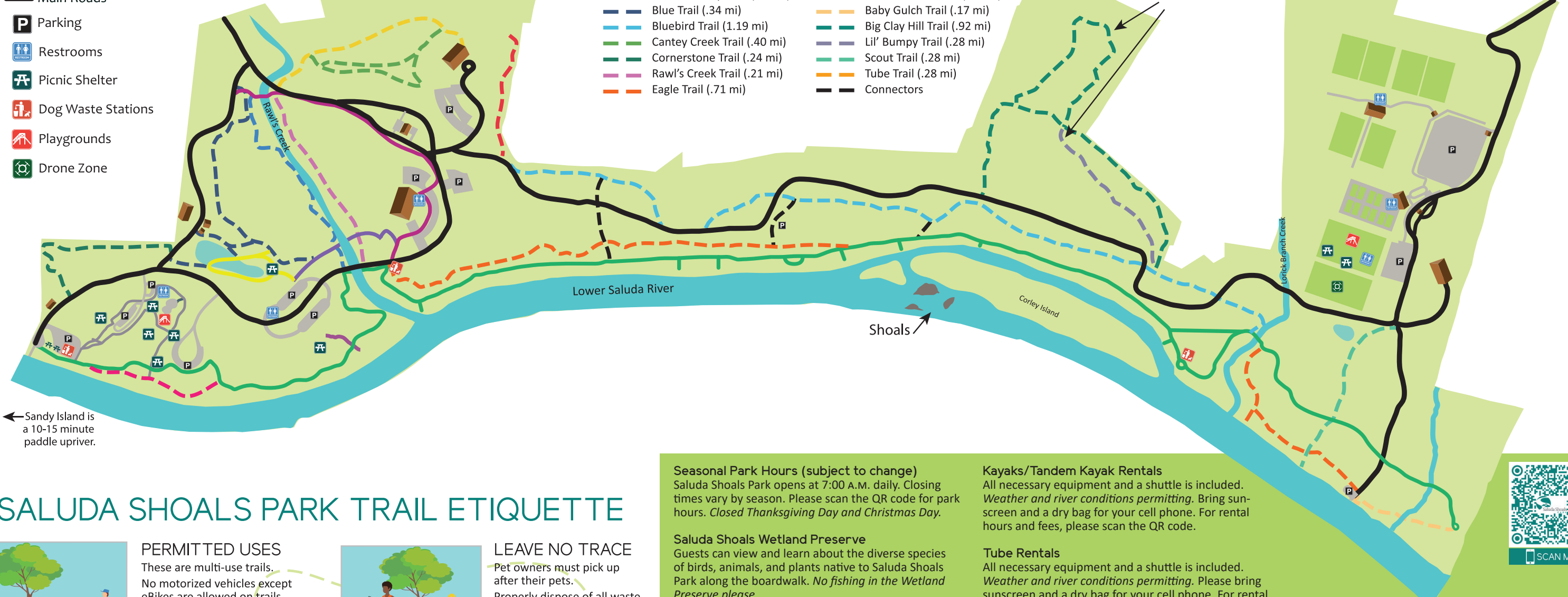
- Main Roads
- Parking
- Restrooms
- Picnic Shelter
- Dog Waste Stations
- Playgrounds
- Drone Zone

West Entrance
5605 Bush River Road

- | | | |
|--------------|----------------------------------|------------------------------|
| Paved Trails | Cattail Connector Trail (.17 mi) | Beaver Trail (.30 mi) |
| | Entrance Trail (.49 mi) | Nature Trail (.17 mi) |
| | Greenway Trail (2.57 mi) | River Center Trail (.28 mi) |
| | Wetland Loop Trail (.21 mi) | Vulture Roost Trail (.19 mi) |
| | Blue Trail (.34 mi) | Baby Gulch Trail (.17 mi) |
| | Bluebird Trail (1.19 mi) | Big Clay Hill Trail (.92 mi) |
| | Cantey Creek Trail (.40 mi) | Lil' Bumpy Trail (.28 mi) |
| | Cornerstone Trail (.24 mi) | Scout Trail (.28 mi) |
| | Rawl's Creek Trail (.21 mi) | Tube Trail (.28 mi) |
| | Eagle Trail (.71 mi) | Connectors |

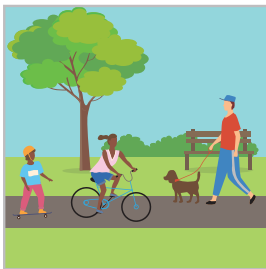
The Big Clay Hill & Lil' Bumpy trails are technical and can be difficult for bikers and runners.

East Entrance
6071 St. Andrews Road



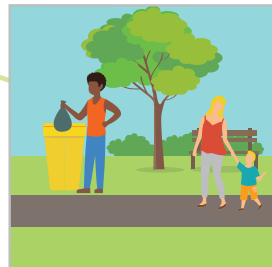
← Sandy Island is a 10-15 minute paddle upriver.

SALUDA SHOALS PARK TRAIL ETIQUETTE



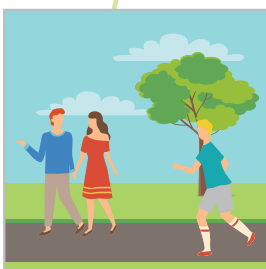
PERMITTED USES

These are multi-use trails. No motorized vehicles except eBikes are allowed on trails. Dog are permitted on a leash.



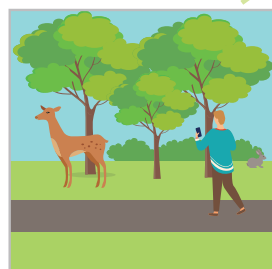
LEAVE NO TRACE

Pet owners must pick up after their pets. Properly dispose of all waste. Leave what you find.



SHARE THE TRAILS

Always travel at safe speeds. Stay to the right except to pass. Announce yourself by saying "on your left" when passing from behind. Stop at all road crossings and yield to traffic. Don't block the trail. Be considerate of fellow trail users.



RESPECT WILDLIFE

Observe animals from a safe distance. Always yield to wildlife on the trails. Watch for wildlife crossing the road when driving. Never feed wildlife. Remember, this is their home.

Seasonal Park Hours (subject to change)
Saluda Shoals Park opens at 7:00 A.M. daily. Closing times vary by season. Please scan the QR code for park hours. *Closed Thanksgiving Day and Christmas Day.*

Saluda Shoals Wetland Preserve
Guests can view and learn about the diverse species of birds, animals, and plants native to Saluda Shoals Park along the boardwalk. *No fishing in the Wetland Preserve please.*

Saluda Splash
Saluda Splash is a zero-depth, interactive water playground. For hours and fees, scan the QR code.

Fishing
Fishing is allowed along the riverbanks and in the creeks. Must have a current SC fishing license. Fishing supplies are not sold in the park.

Saluda Shoals Park Passes
Saluda Shoals Park Pass
This 12-month pass entitles access to Saluda Shoals Park during regular park hours.

Fisherman's Pass
This 12-month pass provides 24-hour access to the park using a coded entry system.

Barking Lot Pass
This 12-month pass provides access to a fenced, off-leash area for dogs. Amenities include access to water and a shelter for shade. Visit icrc.net for policies.

Kayaks/Tandem Kayak Rentals
All necessary equipment and a shuttle is included. *Weather and river conditions permitting.* Bring sunscreen and a dry bag for your cell phone. For rental hours and fees, please scan the QR code.

Tube Rentals
All necessary equipment and a shuttle is included. *Weather and river conditions permitting.* Please bring sunscreen and a dry bag for your cell phone. For rental hours and fees, please scan the QR code.

Team Building/Low Ropes Challenge Course
Team building activities are available for both youth and adults. Call 803-213-2057 for information.

Disc Golf
18-hole disc golf course is available for play on the east end of the park. Bring your own disc.

Meeting Facility Rentals

- The River Center offers 5,000 sf of meeting space for large and small gatherings.
- The Environmental Center has two classrooms and an outdoor deck.
- Picnic shelters throughout the park accommodate groups from 25 to 200.

Visit www.icrc.net or call 803-772-1228 for details.

The Courts Tennis Center
The Courts feature six clay and four hard surface courts for tournament and recreational play. For information and rentals, call 803-772-1228.

The Fields
Saluda Shoals Park is home to six soccer, lacrosse, and multi-use fields for tournament and recreational play. For details call 803-772-1228.

Leo's Landing Inclusive Playground
Located on the east end of the park, this four-acre universally inclusive playground is designed for children and adults of all abilities.

Help Support Saluda Shoals Park
Donate to the Saluda Shoals Foundation by calling 803-213-2035 or visit www.saludashoalsfoundation.org.

For More Information
Visit www.icrc.net or call 803-772-1228.

Contact a Saluda Shoals Park Ranger
For assistance, park rangers can be reached at 803-479-9886.

#saludashoalspark
Tag us! @saludashoalspark

